

## Steca TK RW2

### IFA router for online visualisation

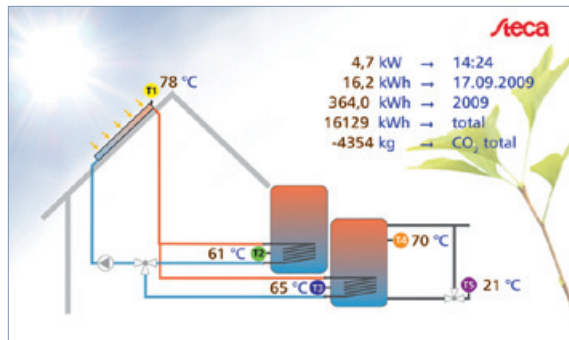
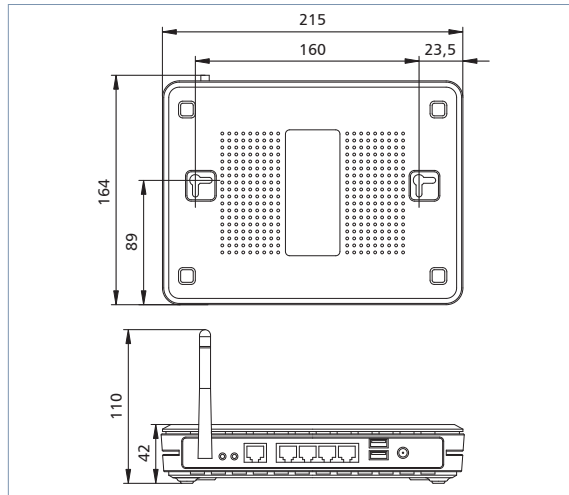
The Steca Internet remote display allows permanent monitoring and performance analysis of one or more solar energy systems. The Steca TK RW2 IFA router allows visualisation of the operation of solar thermal systems: Temperature and performance data are clearly displayed for analysis in an Internet browser window.

This works in a simple way: The Steca TR 0603mc or Steca TR A503 TTR solar thermal controllers cyclically send measurements to the IFA router. The Steca TK RW2 processes the data and forwards it to a central server via cable modem. The server archives this information and presents it visually in the Internet - as system images, graphics, tables, diagrams and even as a slide show. These visualisations can also be sent from the IFA router to a smartphone or laptop via WLAN or via mediabox to a monitor\* or a projector\*.

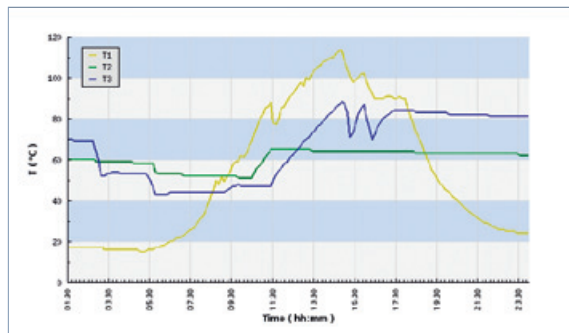
Not only the momentary values for each solar energy system are visualised but also the changes in temperature over time using easy to understand diagrams. If a heat meter is also used then, in addition to momentary values, the system is even capable of displaying energy balances and CO<sub>2</sub> savings.

By logging in with their personal user name and password the operator can use the Internet to monitor their system information from any location in the world.

This allows simultaneous management and monitoring for correct operation of multiple systems. The raw data archived on the server can be downloaded for detailed analysis with Steca TS Analyzer 2. Historical information is permanently available for comparative monitoring of system functions. This allows malfunctions and the origins of faults to be quickly recognised, analysed and corrected, which greatly improves the operational reliability of the system.



Solar energy system with two storage tanks displaying the current measured temperature values, instantaneous power, daily, annual and total energy balance and CO<sub>2</sub> saving



Current measured temperature values displayed on the daily diagram



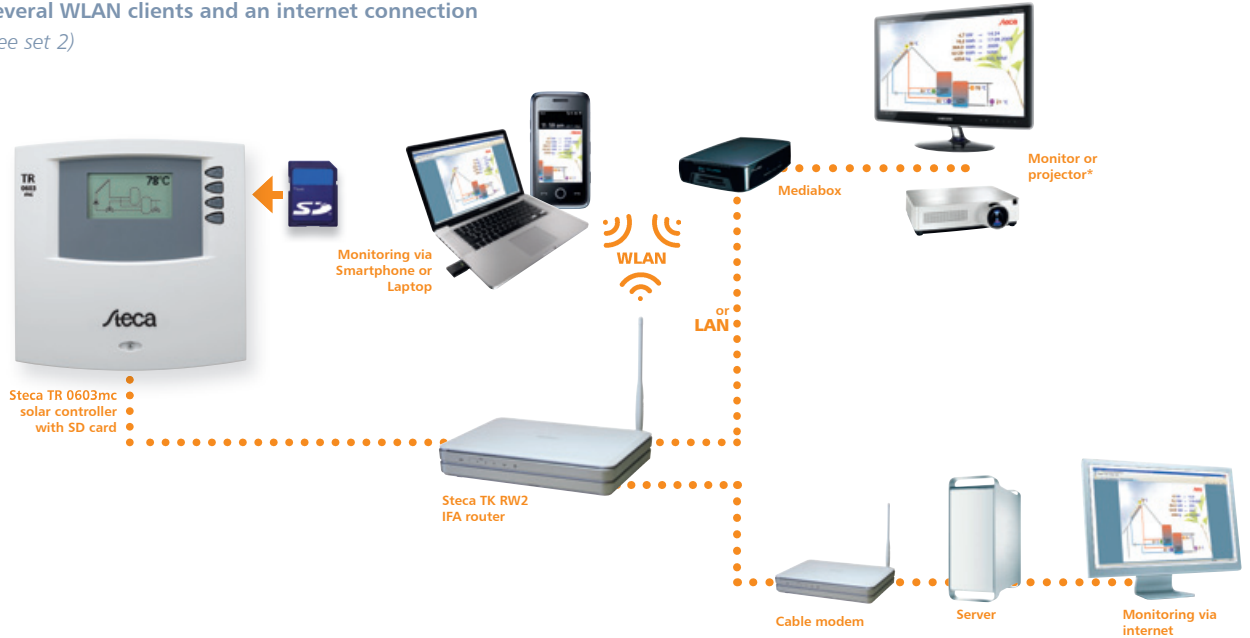
### Steca TR A503 TTR solar controller with the Steca TK RW2 IFA router, several WLAN clients and an internet connection

(see set 1)



### Steca TR 0603mc solar controller with the Steca TK RW2 IFA router, several WLAN clients and an internet connection

(see set 2)



#### IFA router sets

There is a suitable data cable connection between the IFA router set and the solar controller. Various sets are available:

- Set 1: Steca TK RW2 with USB/TTL-cable to connect with Steca TR A503 TTR.
- Set 2: Steca TK RW2 with serial data cable and USB adapter to connect with Steca TR 0603mc.

\*with HDMI, DVI or composite video input