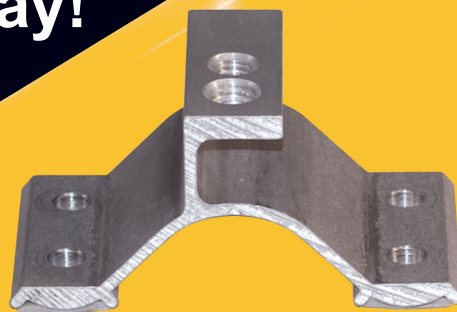
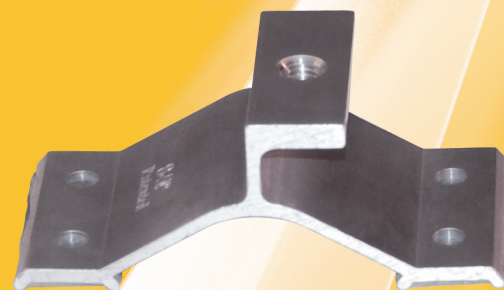


# S-5!®

## The Right Way!



CorruBracket



CorruBracket AU

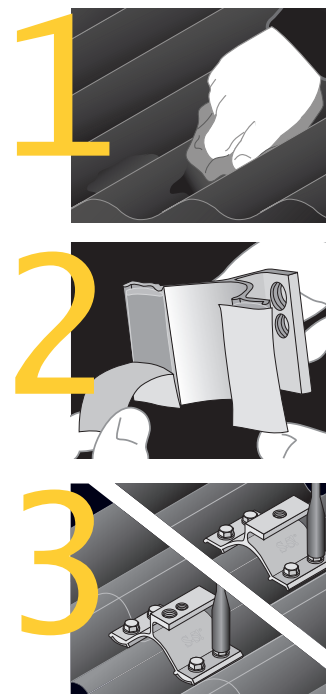
### CorruBracket™ and CorruBracket AU™

CorruBracket™ can be used to mount almost anything to corrugated metal roofing and is compatible with 7/8" and 3/4" corrugated roofing, while the CorruBracket AU™ is designed specifically for the Australian market and is compatible with 16-18mm corrugated roofing profiles. Each comes with factory-applied butyl sealant already in the base, and the S-5!® patented reservoir conceals the sealant from UV exposure, preventing drying and cracks.

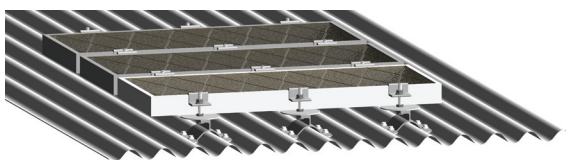
Installation is simple! CorruBracket and CorruBracket AU are mounted directly into the supporting structure of the roof, i.e. roof decking, wood or steel purlins or trusses. No surface preparation is necessary; simply wipe away excess oils and debris, peel the release paper, align and apply. Secure through the pre-punched holes using the appropriate screws for the supporting structure. No messy sealants to apply! No chance for leaks!

Strong enough for heavy-duty applications, the CorruBracket and CorruBracket AU are the perfect match for S-5!®'s ColorGard® snow retention system, and their easy installation make them the best solution for installing photovoltaic solar arrays to corrugated roofing with the S-5-PV Kit.

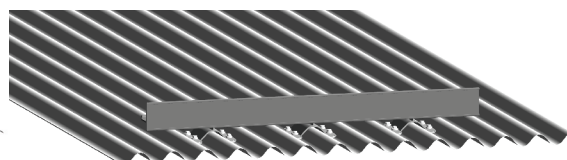
You asked for it!  
We've got it! Now  
attach S-5-PV Kit and  
PV modules, through  
DirectAttached™ or  
Rail methods, along  
with many more  
roof accessories to  
corrugated roofing  
with the S-5!  
CorruBracket and  
CorruBracket AU.



### S-5-PV Kit (DirectAttached™ or Rail)



### ColorGard®



Example Uses

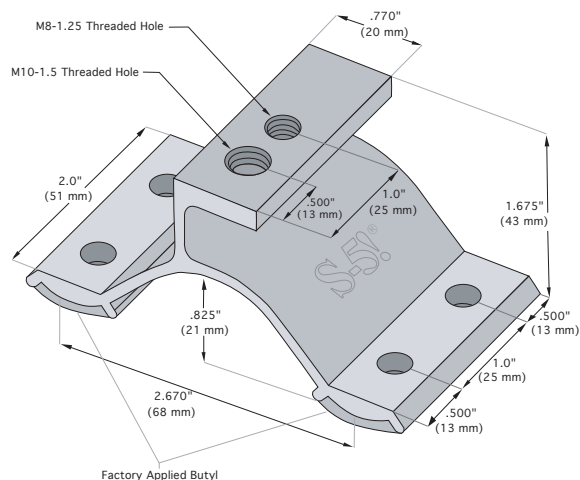
Attach almost **anything** to corrugated metal roofing, with no messy sealants and no chance for leaks!

888-825-3432

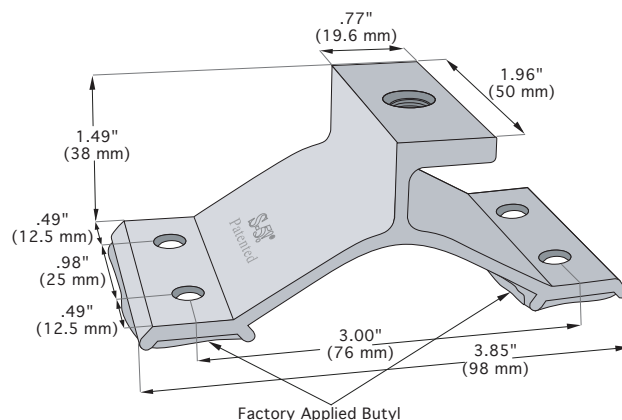
[www.S-5.com](http://www.S-5.com)

CORRUBRACKET™ AND CORRUBRACKET AU™

## CorruBracket™



## CorruBracket AU™

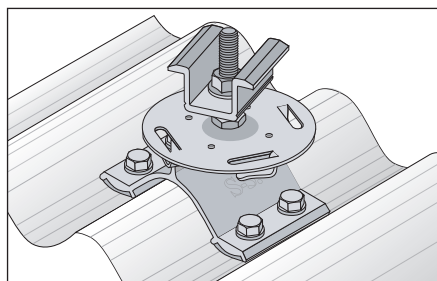
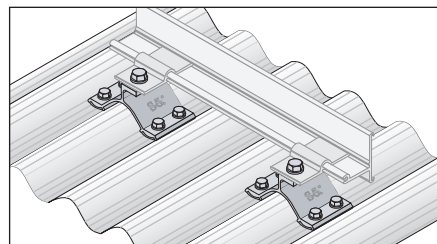


Each CorruBracket and CorruBracket AU comes with factory-applied butyl sealant in the base. CorruBracket and CorruBracket AU are compatible with most common metal roofing materials. For design assistance, ask your distributor, or use our web-based calculator at [www.S-5.com](http://www.S-5.com) for job-specific system engineering and design of your next snow retention project. Also, please visit our website for more information including CAD details, metallurgical compatibilities and specifications.

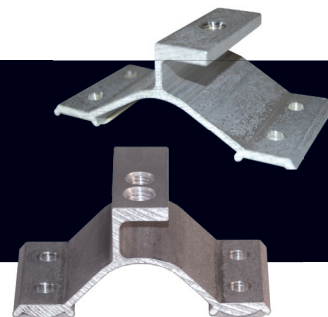
The CorruBracket and CorruBracket AU have been tested for load-to-failure results on wood decking, metal and wood purlins. The independent lab test data found at [www.S-5.com](http://www.S-5.com) can be used for load-critical designs and applications. S-5! holding strength is unmatched in the industry.

Contact your distributor for information on hardware needs.

### Example Use



**CorruBracket and CorruBracket AU are extremely versatile. No messy sealants to apply. The factory-applied butyl sealant waterproofs and makes installation a snap!**



**S-5! Warning! Please use this product responsibly!**

Products are protected by multiple U.S. and foreign patents. For published data regarding holding strength, bolt torque, patents and trademarks visit the S-5! website at [www.S-5.com](http://www.S-5.com).

Copyright 2010, Metal Roof Innovations, Ltd. S-5! products are patent protected. S-5! aggressively protects its patents, trademarks and copyrights.

Distributed by